



RECP #: 752677

RECORDED 5/8/2019 AT 1:11 PM BK# 2620 PG# 1719  
Debra K. Lee, CLERK OF LARAMIE COUNTY, WY PAGE 1 OF 1

# STATE OF WYOMING CORNER RECORD

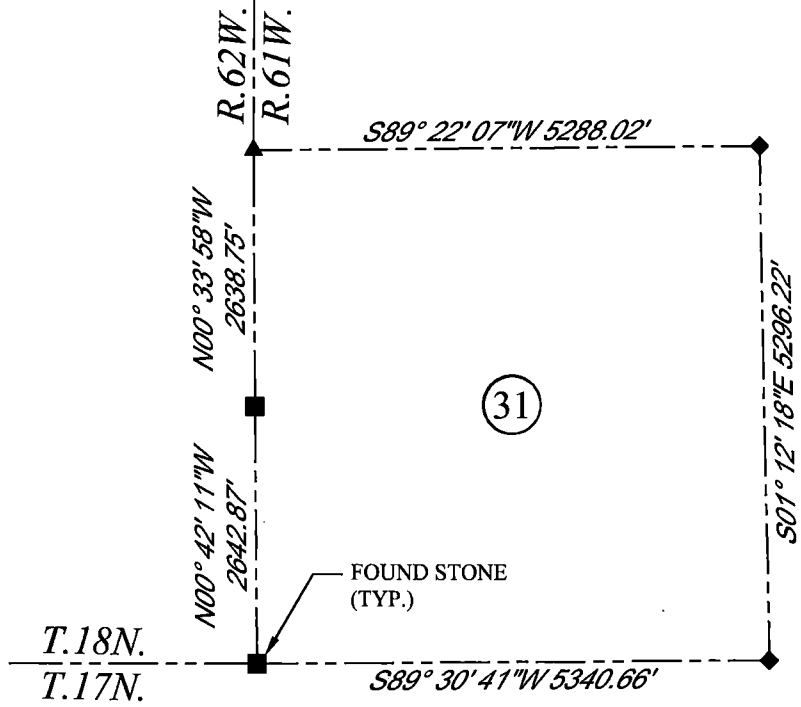
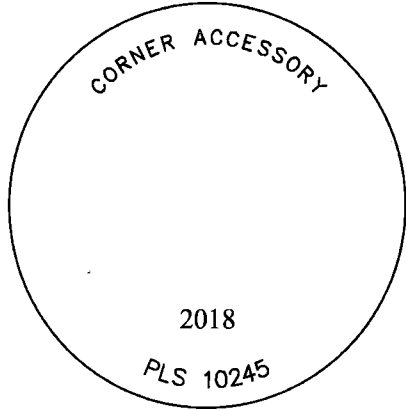
(In compliance with the CORNER PERPETUATION AND FILING ACT, Wyoming Statutes, 1997 Section 33-29-140, et. seq., and the Rules and Regulations of the Board of Registrations for Professional Engineers and Professional Land Surveyors)

## SOUTHWEST CORNER SECTION 31, T. 18 N., R. 61 W., 6TH P.M., LARAMIE COUNTY, WYOMING

**GLO:** SET A LIMESTONE 20X18X8. 15" DEEP WITH 6 NOTCHES ON EACH OF THE 4 EDGES AND SET TO THE CARDINAL POINT AND RAISED A MOUND OF STONE AROUND IT FOR COR. TO TOWNSHIPS 17 AND 18 NORTH, RANGES 61 AND 62 WEST.  
**FOUND:** FIRM SET LIMESTONE APPROX. 14X15X4, WITH 5 VISIBLE NOTCHES ON N & S FACES AND 2 NOTCHES ON E & W FACES, STONE WAS 0.1' ABOVE SURFACE.  
**SET:** 3.25" ALUMINUM CAP ON #5 REBAR, 2" ABOVE SURFACE, MARKED AS SHOWN, SET ON SOUTH SIDE OF FOUND FIRM SET LIMESTONE WITH MARKINGS, CORNER IS DIRECTLY UNDER N & S FENCE LINE.



SCALE: NONE  
NORTH DETERMINED BY  
G.P.S OBSERVATIONS



### LEGEND:

- FOUND BLM CAP
- FOUND USFS CAP
- FOUND STONE
- ◻ FOUND PRIVATE MONUMENT
- ◊ CALCULATED POSITION
- ▲ SET MONUMENT (LS10245)
- SECTION LINE

DATE OF FIELD WORK: 10/02/2018 OFFICE REFERENCE: MERIDEN

### CROSS INDEX DIAGRAM

	1	2	3	4	5	6	7	8	9	10	11	12	13	14	15	16	17	18	19	20	21	22	23	24	25		
A																											B
B																											C
C		6			5				4				3				2			1							D
D																											E
E																											F
F																											G
G			7			8			9			10			11			12									H
H																											J
J																											K
K																											L
L			18			17			16			15			14			13									M
M																											N
N																											O
O																											P
P			19			20			21			22			23			24									Q
Q																											R
R																											S
S																											T
T			30			29			28			27			26			25									U
U																											V
V																											W
W																											X
X			31			32			33			34			35			36									Y
Y																											Z
Z	1	2	3	4	5	6	7	8	9	10	11	12	13	14	15	16	17	18	19	20	21	22	23	24	25		

WOOD  
2615 AVIATION DRIVE  
SHERIDAN, WY 82801  
PH: 307-675-6400

# wood.

THIS CORNER RECORD WAS  
PREPARED BY ME OR UNDER  
MY DIRECTION AND  
SUPERVISION,  
SEAL AND SIGNATURE

